

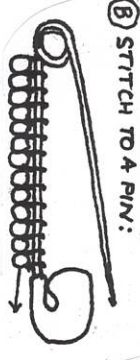
FREE PRINTABLE DOWNLOAD AT

BEAD SIZE	DIAMETER	NEEDLE NYMO	NEEDLE NYMO SIZE	THREAD	NYMO	BEADS PER INCH
20/0	1.0mm	15	A.00.0			56
15/0	1.5mm	13	A.00.0			25
12/0	1.7mm	13	A.00.0			21
12/0	1.9mm	12	A.00.0	B		14
11/0	2.1mm	11	O.B.D			13
10/0	2.3mm	10	B.D.F			16
8/0	2.9mm	ANY	D.F			13
6/0	4.1mm	ANY	D.F			8
4/0	5.1mm	ANY	F			4
1/0	6.6mm	ANY	ANY			5

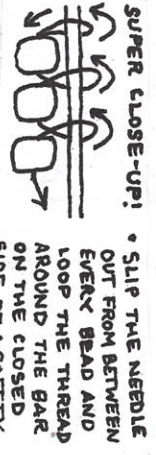
* NOTE: FOR BOTH BEADS AND NEEDLES, A LARGER NUMBER MEANS A SMALLER SIZE.

BEAD WORK SIZE CHART

NOW ON TO THE MAIN EVENT! THIS ICE OUT PATCH IS A GRID OF 13x13 BEADS THAT CAN BE STITCHED TO A SAFETY PIN, OR ADD A BEADED LOOP TO ATTACH TO A NECKLACE OR EARRINGS.

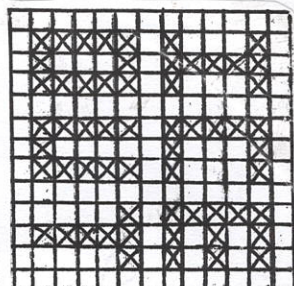
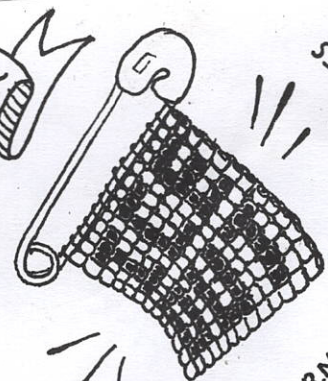


STITCH TO A PIN:



SUPER CLOSE-UP!
 • SLIP THE NEEDLE OUT FROM BETWEEN EVERY BEAD AND LOOP THE THREAD AROUND THE BAR ON THE CLOSED SIDE OF A SAFETY PIN, THEN PASS UNDER THE NEXT BEAD AND REPEAT ACROSS THE TOP ROW, WHICH - EVER FINISHING YOU CHOOSE, ANCHOR THE END BACK INTO THE PATCH FOR 2-3 ROWS.

AN INTRO TO...
SQUARE STITCH BEADWORK
 LEARN A NEW SKILL AND SPREAD THE WORD - IMMIGRANTS ARE WELCOME HERE! ICE OUT NOW!



- 13 A
- 1A, 3B, 14, 3B, 14, 3B, 14
- 2A, 1B, 2A, 1B, 3A, 1B, 3A
- 2A, 1B, 2A, 1B, 3A, 3B, 1A
- 2A, 1B, 2A, 1B, 3A, 1B, 3A
- 1A, 3B, 1A, 3B, 1A, 3B, 1A
- 13 A
- 1A, 3B, 1A, 1B, 1A, 1B, 1A, 3B, 1A
- 1A, 1B, 1A, 1B, 1A, 1B, 1A, 1B, 2A, 1B, 2A
- 1A, 1B, 1A, 1B, 1A, 1B, 1A, 1B, 2A, 1B, 2A
- 1A, 3B, 1A, 3B, 2A, 1B, 2A
- 13 A

TO ADD A WEARABLE FINISHING TO THIS PATCH, BEGIN BY WEAVING A NEW THREAD FROM THE THIRD ROW UPWARDS TO ANCHOR IT. WHEN YOU REACH THE TOP ROW, YOU CAN EITHER:



ADD A LOOP!

• PASS THE NEEDLE OUT FROM UNDER THE FAR SIDE OF BEAD #7, THREAD ON 6 NEW BEADS IN COLOR A, THEN SLIP THE NEEDLE BACK UNDER THE NEAR SIDE OF BEAD #7 AND CONTINUE TO THE ROW'S END.



THREAD ON 5 BEADS IN COLOR A, AND 1 BEAD IN COLOR B.

TO BEGIN, SECURE AN ANCHOR BEAD TO A THREADED NEEDLE. CHOOSE ANY BEAD THAT'S LARGER THAN YOUR MAIN BEADS AND PASS THE NEEDLE THROUGH IT, IN THE SAME DIRECTION, AT LEAST 3 TIMES - LEAVING A ~3" TAIL BEHIND IT. THIS BEAD WILL BE SUPPED OFF AT THE VERY END, AND WILL SERVE AS A VISUAL MARKER FOR THE BEGINNING ROW.

TO LEARN THIS STITCH, WE'LL BE WORKING IN 2 ALTERNATING COLORS OF THE SAME SIZE BEADS, WITH 5 BEADS IN EACH ROW. REPEAT AS MANY ROWS AS YOU LIKE UNTIL YOU FEEL CONFIDENT IN THE STITCH!



AN OFF-LOOM, GRID-BASED, HANDSTITCHED BEADWORK TECHNIQUE INTRODUCING THESE

ONCE YOU'VE ADDED THE FINAL BEAD, LOCK THE 2 FINISHED ROWS TOGETHER BY PASSING THE NEEDLE FROM LEFT TO RIGHT THROUGH EVERY BEAD IN ROW A, THEN FROM RIGHT TO LEFT THROUGH ALL OF ROW B.

CONTINUE THIS PROCESS ACROSS THE ROW, LOCKING EACH NEW BEAD IN COLOR B TO THE BEAD BELOW IT IN COLOR A.

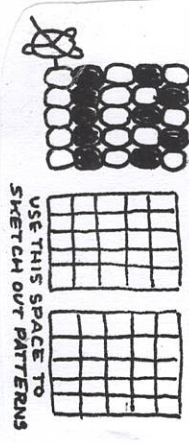
TO TURN THE ROW: LOCK THIS BEAD TO THE BEAD BELOW IT BY STITCHING A LOOP CONNECTING THE TWO.

BEGIN THE NEXT ROW BY TURNING THE NEEDLE TO THE RIGHT, AND-

REPEAT STEPS 3-4, MOVING FROM LEFT TO RIGHT INSTEAD OF RIGHT TO LEFT.



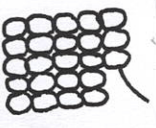
CONTINUE AS LONG AS YOU'D LIKE TO PRACTICE. YOU CAN EVEN TRY OUT SOME PATTERN VARIATIONS!



USE THIS SPACE TO SKETCH OUT PATTERNS

TO FINISH YOUR PIECE:

WEAVE THE NEEDLE IN A SERPENTINE Zig-Zag THROUGH AT LEAST 2-3 ROWS BELOW THE TOP ROW, THEN CUT OFF THE EXCESS THREAD.
 • SLIP OFF YOUR ANCHOR BEAD AND THREAD THE NEEDLE ON TO THE TAIL. WEAVE THE TAIL IN AN UPWARDS Zig-Zag THROUGH AT LEAST 2-3 ROWS, THEN CUT THE EXCESS.



NOTE: IF YOU EVER RUN OUT OF THREAD, APPLY THIS SAME "LOCKING" PRINCIPLE. SLIP THE NEEDLE OFF THE OLD THREAD AND THREAD A NEW LENGTH. WEAVE THIS NEW THREAD UPWARDS THROUGH 2-3 ROWS BELOW YOUR STOPPING POINT, KEEPING THE SAME DIRECTION AS BEFORE. WHEN THE NEEDLE EXITS THE AND ADD NEW WORK. TRIM OFF THE OLD TAIL. ONCE THE NEW ROW IS LOCKED IN.

